



ABN 28 112 712 115



Field Activities Update

Curnamona Energy

Curnamona Energy Limited is exploring and developing Tertiary sand-hosted uranium deposits within the world class Curnamona uranium province of South Australia. Its 100% owned Oban deposit contains 2,100 tonnes of eU_3O_8 within an Inferred Resource of 8.2 million tonnes of uranium mineralisation at an average grade of 260 ppm eU_3O_8 . Approvals are in place to conduct field trials to test operating and design parameters for a full scale in situ recovery operation (>200 tpa). The Company maintains an active exploration program within its 8,000 km² tenement area using its own drilling and logging equipment. Numerous prospects have been identified, which remain to be followed up with close spaced drilling.

Issued Capital

66 million ordinary shares
16.527 million listed options
6.05 million unlisted options

Contact

Dr Bob Johnson – Chairman
+ 61 (0)8 83389292

Curnamona Energy Limited (ASX : CUY, 45% owned by Havilah Resources NL ASX:HAV, referred to as Curnamona Energy or the Company) reports that it has begun a further round of leach circulation tests at Oban using the well house facility installed on site. Circulation is presently between two holes only, using a smaller pump. The objective is to better control the circulating solutions to determine if this yields better results. pH levels in the solution have been progressively declining, and will soon reach optimum levels for leaching. So far no uranium has been detected in solution.

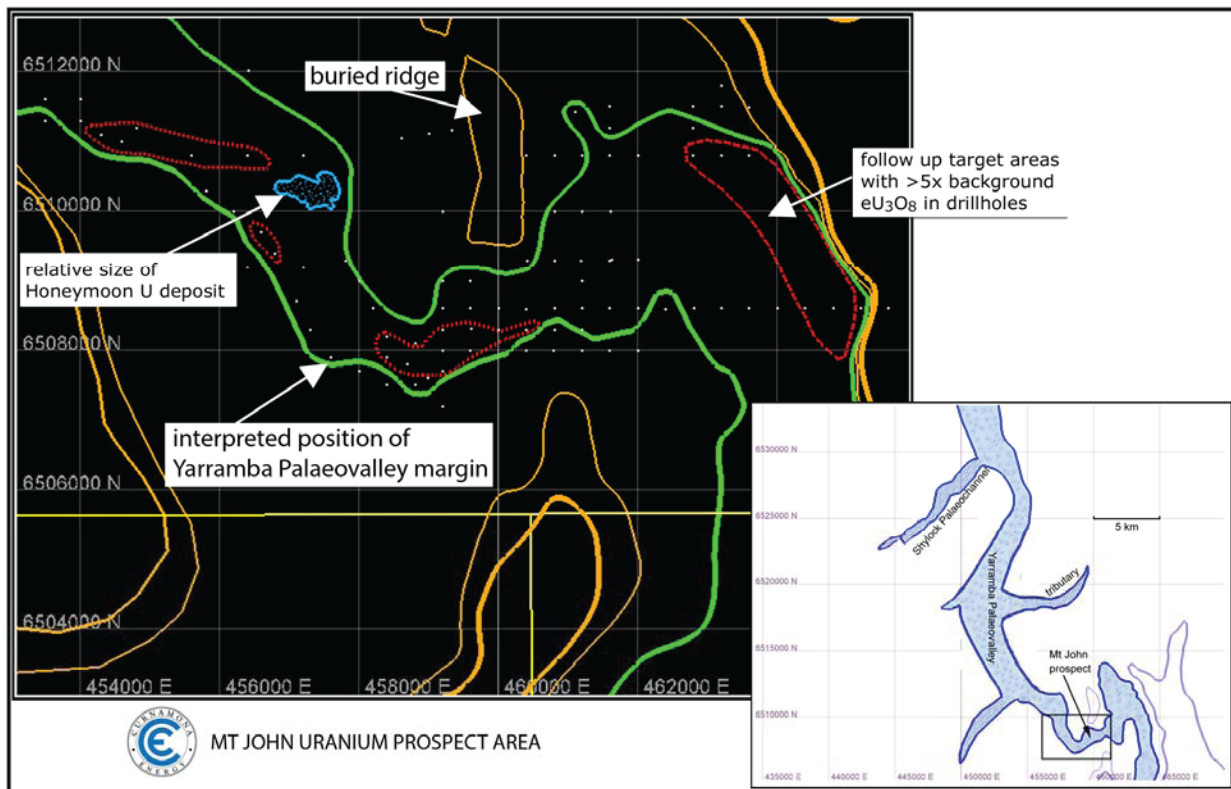
Two additional holes have been drilled and screens seated within good uranium mineralisation. These holes will also be available for future leach tests.



Mudros camp with flooded billabong in the background



The drill rig and ancillary equipment has finally been retrieved from a location that was isolated by floodwaters for the past few months. The equipment has been serviced and mobilized to the Mt John prospect area located within the Yarramba palaeochannel roughly 20 km north of the Honeymoon uranium mine. Drilling at this location roughly five years ago, prior to the discovery of Oban, returned numerous promising uranium hits on quite widely spaced drillholes. Of the holes located within the palaeochannel, significant uranium indications were returned in 35% of cases (where “significant” is defined as a radiometric response greater than five times the background response). These areas, indicated in red on the accompanying map, will be the target of the current program of infill drilling. At current drillhole spacing of more than 400 metres it would be possible to miss higher grade uranium mineralized “ribbons” along the palaeochannel margins.



Dashed red lines outline areas of significant uranium mineralisation within the Yarramba palaeochannel that was discovered by the Company more than five years ago. The current drilling program will aim to test for viable uranium resources within these areas.

For further information visit the Company website www.curnamona-energy.com.au or contact :

Dr Bob Johnson, Chairman, on (08) 83389292 or email : info@curnamona-energy.com.au



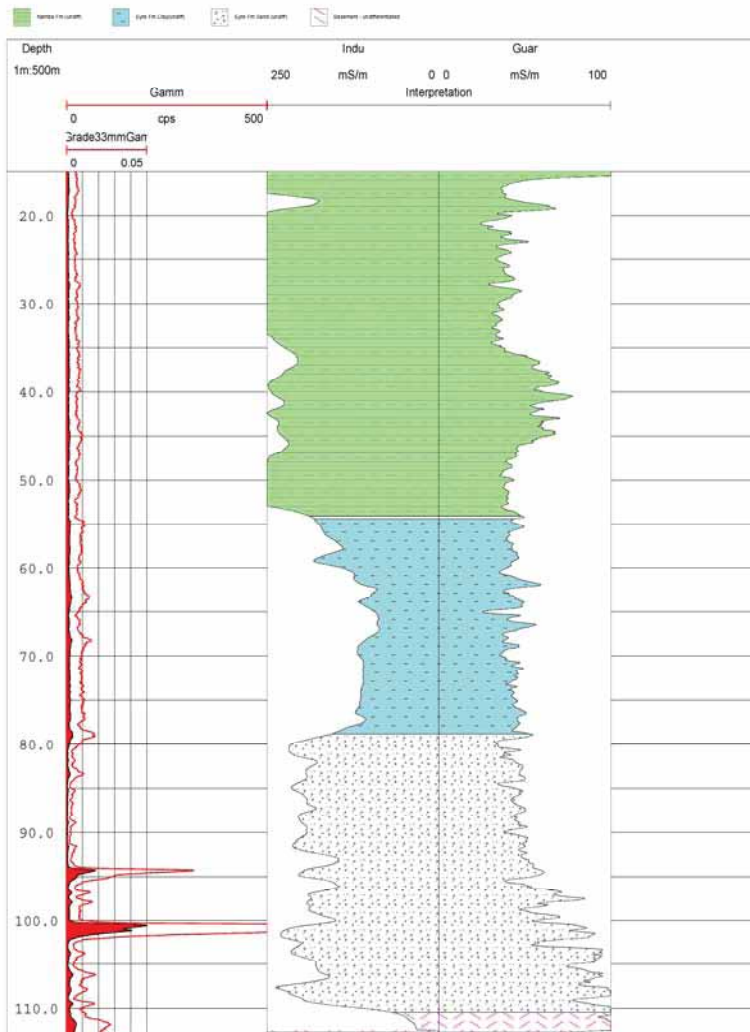
Competent Persons Statement

The information in this report has been prepared by geologists Dr Bob Johnson and Mr Mark Randell who are members of the Australasian Institute of Mining and Metallurgy and Dr Chris Giles who is a member of The Australian Institute of Geoscientists. Drs Johnson and Giles are employed by the Company on consulting contracts and Mr Randell who is employed full time as General Manager. They have sufficient experience which is relevant to the style of mineralization and type of deposit under consideration to qualify as Competent Persons as defined in the JORC Code 2004. Drs Johnson and Giles and Mr Randell consent to the release of the information compiled in this report in the form and context in which it appears.



Tenement: Mulyungarie
Co-ords (AGD66) 460400E 6508300N
Date
Geologist M H Randell

Hole ID CEM021



Promising gamma responses from drillhole CEM021 completed by Curnamona Energy more than five years ago at the Mt John prospect. This exploration drillhole lies near the southern margin of the Yarramba palaeochannel within one of the red areas shown on the above map. Due to focus on exploration activities in the Oban area, this and other promising nearby uranium intersections have never been followed up.